

# News letter

Welcome to Cleobury Country Farmers Markets FIRST newsletter. We are hoping to publish this every season to keep you all up to date on what you might have missed at a market, news of new traders and market events, seasonal recipes using local produce and more!

If this sounds like something you would be interested in receiving via email then let us know. Email [business@cleoburycountry.com](mailto:business@cleoburycountry.com) to be added to the list. Alternatively hard copies will be available from the Cleobury Country Centre, Market Hall and of course the Markets.

## Welcome to our new Traders

Last month, April, we welcomed two new traders to our gang! Kay Carpenter from Lickhill Farm Meats and Guy Neath from Vegetable Garden Veg Boxes. Lickhill Meats, the local family run farm business will be bringing to us their own home reared beef and lamb in the form of joints & chops etc. Vegetable Garden Veg boxes offer locally sourced, where possible, fresh fruit and veg boxes. He will not only be at the markets monthly but will deliver a veg box to your door on a weekly basis. We hope you enjoy our markets as much as we do.

## Happy Birthday to CCFM!

April marked the turn of our second birthday and we would just like to say many thanks for all your ongoing support throughout the last two years. Many Thanks to St Marys Church and Cleobury Parish Council for their support, our traders and customers; without you the markets wouldn't be the success that they have been. We look forward to seeing you at future markets.



## Upcoming Markets

- 16th May
- 20th June
- 18th July

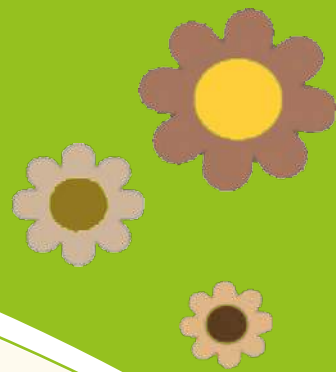
All markets are held at St Marys Church, CM 9.30am-12.30pm

Also coming up in July The Great Cleobury Bake Off competition! Keep an eye out for more information!

## Cleobury Community Gardens

Cleobury Country Ltd have teamed up with Lacon Childe School to offer out the small allotments, to the side of Lacon Childe School. Ideal for those who want to grow a small amount of veg and plants for the summer. Be sure to take a look at the Community Gardens and watch them develop!





## Featured Business; Land Scape Plants

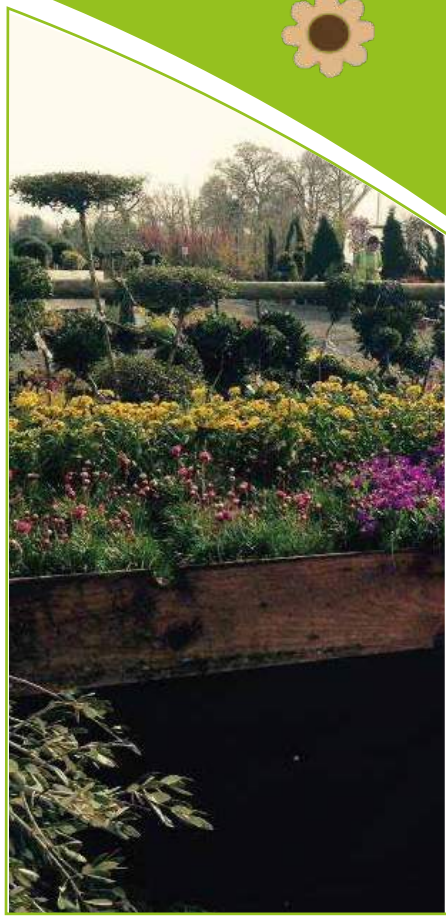


From cottage perennials to Italian topiary, flowering climbers to giant bamboo, big trees and wide range of shrubs we're here for all your gardening needs.

Opening hours:  
Monday - Friday 9am - 4pm  
Contact Landscape Plants;  
Website: [www.landscapeplants.co](http://www.landscapeplants.co)  
Telephone: 01299 270700  
Find them on Facebook.

We like to do our bit for our local businesses and thats why we offer 'featured business' tables at our market, if you would be interested in being a featured business one month then contact us on; 01299 272300.

Pictured Right: Plants & Trees at Land Scape Plants Nursery



## Congratulations to Severn Hospice!

Big congratulations to Severn Hospice winners of our annual easter shop window display competition. Judge David Robinson presented the shield, sponsored by Mawley Milk, to Gayna Woodland at April's market. Many thanks to all those who took part, our sponsors Mawley Milk and our Judge David Robinson.

Pictured Above: Gayna Woodland receiving the shield from David Robinson.

## Local Groups & Entertainment we need YOU!

- Musicians
- Local Groups
- Local Sports Clubs
- Entertainers

Use Cleobury Country Farmers Market as an opportunity to obtain members, showcase your talents and create publicity.



## Farewell and Good Luck!

March saw us say good bye to Paul & Gill of Scrummy Stuff as they leave us for retirement.

As one of our longest stall holders we would like to thank them for all their help and support we have been delighted to work with you both.

We wish them all the best in the future and hopefully they will be able to call in to the Farmers Market as customers not traders!

Pictured Left; Paul & Gill at their last CCFM.

